

INTRODUCING

The SlumpHUMP™

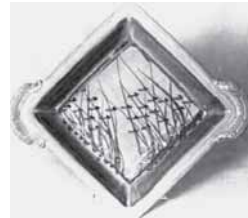
FROM PURE AND SIMPLE POTTERY PRODUCTS

SlumpHump™ is a durable plastic mold that allows you to pour your own low-cost plaster molds, quickly and easily. Available in fourteen popular shapes and sizes, the SlumpHump™ is a reversible mold; you can pour both slump and hump molds.

The tapered wall allows you to vary the mold simply by adding plaster to the desired depth. In this way, you can make both a baking dish and a platter from the same mold simply by varying the depth of the plaster form.



(A) Plate from 9x9 Square

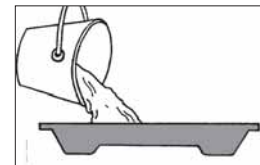


(B) Baking Dish from 9x9 Square

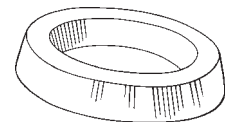
Drape the clay

slab over or into your finished plaster mold to create a beautiful handmade product.

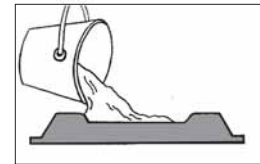
The versatility of the SlumpHump™ allows you to accurately reproduce a single item or an endless variety of designs. The SlumpHump is the perfect system for schools or the studio potter.



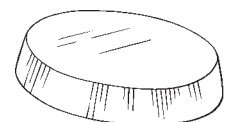
Durable Plastic Form



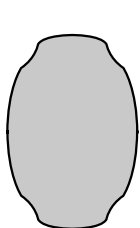
Slump mold



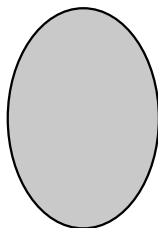
Plastic Form Inverted



Hump mold



K & L



M & N



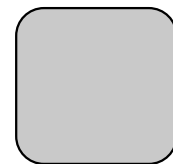
O & P



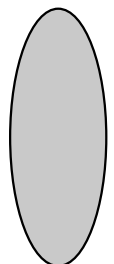
Q



R, S & T



U, V & W



X

Model	H	W	L	RETAIL	Model	H	W	L	RETAIL
K. Large Deco	1	11	17	55	R. Lg. Rectangle	1	11	17	55
L. Medium Deco	1	9	13	40	S. Med. Rectangle	2 1/4	10	14	40
M. Large Oval	1 1/2	11 1/2	19	55	T. Sm. Rectangle	2 1/4	7	11	35
N. Medium Oval	2 1/4	9 1/4	13	40	U Large Square	2 1/4	14	14	55
O. Large Ellipse	2 1/4	7	18	55	V. Med. Square	2 1/4	12	12	40
P. Medium Ellipse	2 1/4	6	14	40	W. Small Square	2 1/4	9	9	35
Q. Large Oblong	2 1/4	7	17	55	X. Fish Platter	1 1/2	10	25	65

American Made
with Recycled Plastic

Shipping: U.S.A. add \$10 per order



P.O. Box 337
Willits, CA 95490

707-459-1483

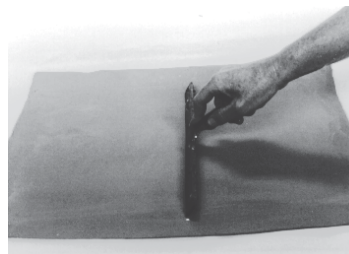
www.pspottery.com

FORM DEVELOPMENT

Here are a few techniques that I have found useful in forming my own pieces. After a while, I'm sure you'll discover many other ways of using the molds.

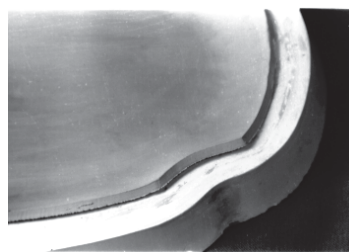
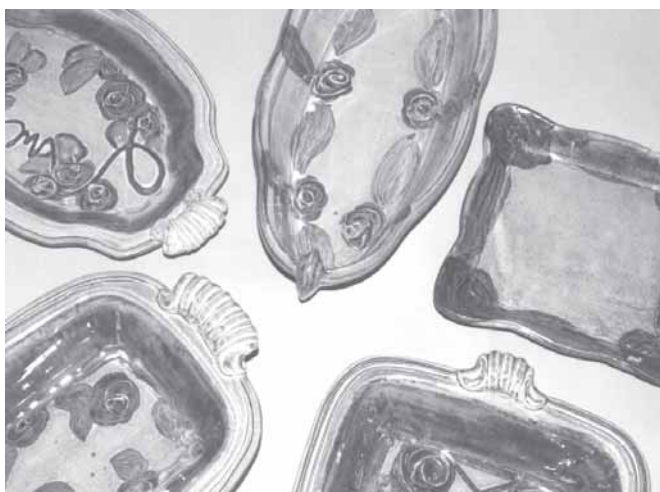
Materials

Fettling knife
Squeegy
Template material
(poster board works well)
Dulled pin tool
Sponge
Rubber rib



1
SMOOTH the slab on both sides using a squeegy.

2
CUT the slab to the right size and shape. (I use a template that gives me an exact fit or I use a flat wooden stick as a guide.



3
POSITION the slab over or in the mold.

4
DEFINE the angles, sides, and rim with a rubber rib and sponge, while turning mold on banding wheel.



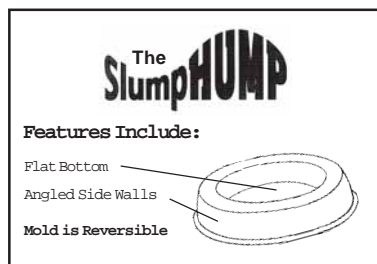
Tips:

Soften any sharp edges of your mold with a fettling knife.

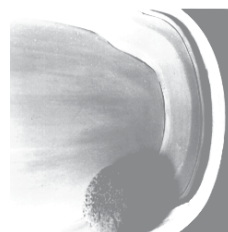
As a general rule, increase the thickness of your slabs as the mold size increases.

A piece of Formica notched with a rattail file is a good tool to finish the rim.

A textured slab can add interest to your finished piece. Experiment with such things as heavily embossed wallpaper, lace, rubber mats, or gunnysack.



Medium Deco by
Melinda Kipp,
Sacramento, CA



5
FINISH the rim with a bevel tool, or as you wish.

6
ADD handles if desired. Rondelle used to texture rim.

